



The Larches Forensic Rehabilitation Service

About the Trust

Black Country Partnership NHS Foundation Trust is a major provider of mental health, learning disability and community healthcare services for people of all ages across the Black Country.

We provide:

- Care and support for people who have mental health needs in Sandwell and Wolverhampton
- A range of specialist health services for people with learning disabilities in Dudley, Walsall, Sandwell and Wolverhampton
- Community healthcare services for children, young people and families in Dudley



The Trust's vision is to improve the health and wellbeing of people of all ages across the Black Country.

The Larches Centre – Forensic Rehabilitation Service

Our specialist forensic rehabilitation service supports males aged 18 – 70 with learning disabilities who have stepped-down from secure units, and individuals who have stepped-up from inpatient units or the community, who require increased supervision but do not need low security.

We support individuals whose primary needs are best met by a learning disability service and who require specially adapted treatment programmes to complete their rehabilitation.

They may also have co-existing mental health difficulties and/or autism.





Our approach to care

Our unit works in conjunction with service users, their carers and advocates, as well as regulatory bodies, to deliver high quality, patient-centred, multidisciplinary care in a safe and therapeutic environment.

From the first contact, our aim is to successfully support patients towards independence in preparation for transition into the community.

We offer a culture of positive risk management and behavioural support. The service applies recovery principles along the care pathway, promoting good quality relationships between staff and patients, where meaningful occupation and support from peers is core to our approach.



The Larches integrates our previous step-down/step-up locked rehabilitation services, including upgraded treatment pathways focusing on living safely in the community upon hospital discharge. Patients admitted to the unit will embark on a rehabilitative pathway that builds on helping them to take more responsibility for their own safety. We also facilitate family and carer contacts, develop interests and activities in the local communities and work with eventual care providers, so that a seamless transition back to the community takes place.

Dr Joe Vella, Consultant Psychiatrist, Learning Disabilities



Our staff

Our experienced multi-disciplinary team at The Larches includes a Consultant Psychiatrist and Specialty Doctors, Psychologists, Occupational Therapists, Speech and Language Therapists, and Pharmacists. The Matron for Learning Disabilities forensic pathway also closely supports the nursing team.

Dental, optical and chiropody services are accessed through local community health facilities, and we also work closely with vocational and educational providers.

Patients also have access to advocates and the Trust's chaplaincy and spiritual care services.



Patients are supported by a range of multidisciplinary professionals who deliver high quality care and therapeutic input. Psychological interventions cover both criminogenic and mental health needs where appropriate, as well as treatment and maintenance groups, with integration of individual work within the wider therapeutic milieu.

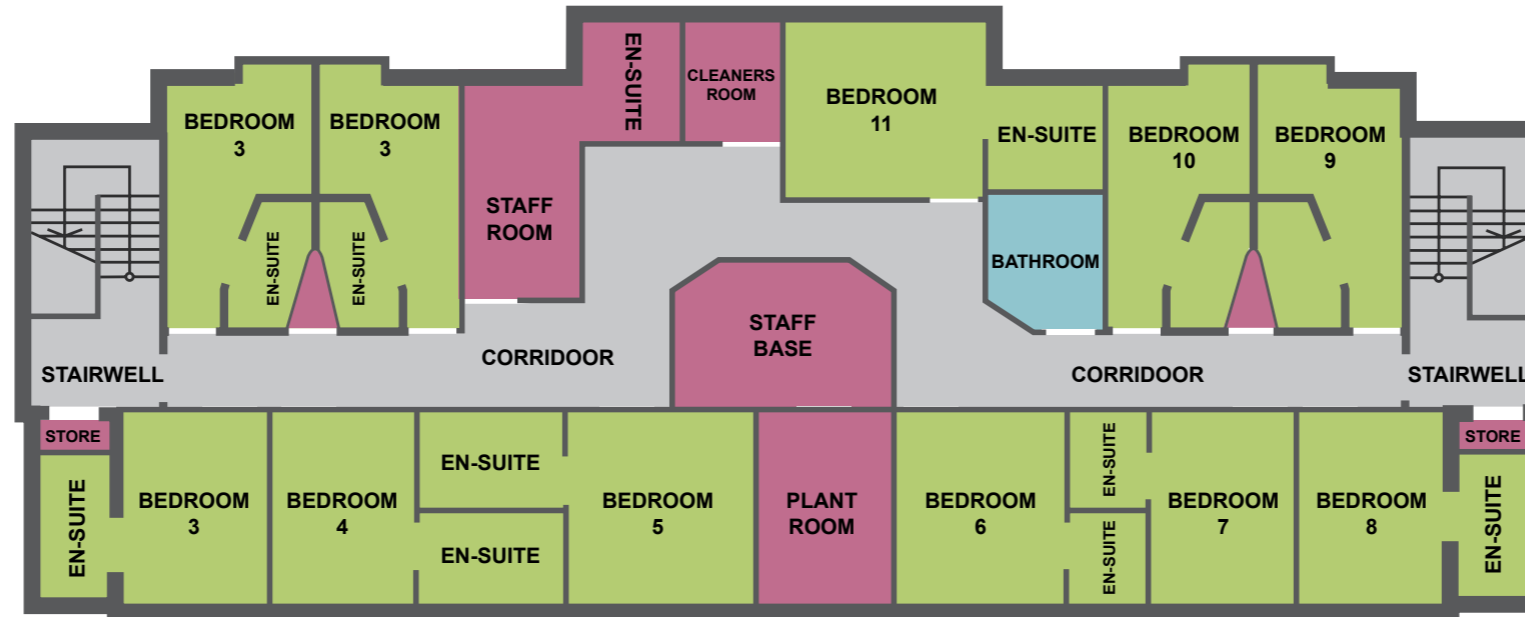
The use of community leave will be a key intervention which will allow patients to practice managing their risks with the support of a multidisciplinary team.

Dr Ben Hobson, Senior Clinical Psychologist



Floor plan

- Accommodation
- Rehabilitation
- Communal Areas
- Clinical Areas
- Staff Areas
- Circulation



Personalised and safe environment

The Larches has been extensively remodelled and refurbished to a high standard. The centre provides a safe and therapeutic environment, with light and spacious living areas and activity rooms.

There are 14 bedrooms with individual en-suite facilities and walk-in showers (the accessible bedroom does not include a walk-in shower). The rooms have anti-ligature fittings. Fitted furniture includes a TV unit, bedside table, wardrobe and shelves, providing plenty of storage and a personalised environment.

The unit also contains a therapeutic kitchen and associated lounge/dining room to provide space for those patients who prepare meals for themselves. All areas are fully risk managed, and we will safely and therapeutically support individuals towards their goals within our small community.



Activities and therapies

All patients develop and receive a therapeutic programme appropriate to their needs and underpinned by a variety of interventions. These are focused on helping patients to prepare for, and integrate into, the community.

While some patients require traditional inpatient therapeutic programmes, the emphasis at The Larches will be living safely in the community, rather than addressing treatment needs solely in an inpatient environment. The team deliver a full range of therapeutic programmes, from anger management groups and individual programmes to activities including gardening and other hobby based interests.



Patient profile

The Larches provides step-up beds from inpatient settings and the community, including both planned and unplanned admissions, as well as step-down beds for people with learning disabilities for low or medium secure units or prison.



The service is for:

- Men with learning disabilities over 18 years of age detained under the Mental Health Act (normally under Part III of the Act)
- Patients who may be appropriately admitted informally but are not detained under the Mental Health Act
- Patients who do not require a degree of security provided by low, medium or high secure services
- Patients who have, or are, at risk of offending, or may benefit from rehabilitative treatment provided at The Larches
- Patients whose behaviour is challenging but involves low levels of violence/sexually disinhibited behaviour
- Patients with co-morbid substance misuse issues
- Patients with borderline levels of intellectual ability who benefit from the offence-specific treatment on offer within The Larches
- Patients under, or who require, Deprivation of Liberty Safeguards

The patient would generally have the potential to engage in a rehabilitation and therapeutic model of care, and will be deemed able to integrate with the patient group already within the service.

Where forensic rehabilitation is not considered the most suitable option for the individual, the assessing team will offer advice and guidance on the management of the patient.



How to make a referral

We welcome referrals from all healthcare providers, commissioners or healthcare organisations.

To discuss or make a referral please contact The Larches by telephone or email.

The referral will be reviewed and responded to as soon as possible.

Further information including bed availability can be found on our website www.bcpft.nhs.uk/professionals.



Location

The Larches at Newton House
Hallam Street Hospital
Hallam Street
West Bromwich
B71 4NH

Email: larches@bcpft.nhs.uk

Tel: 0121 612 8663





Call us on

0121 612 8663

The Larches at Newton House
Hallam Street Hospital
Hallam Street
West Bromwich
B71 4NH



Our Community
you matter, we care